

DF-M Series Micro Switches (HIGH OPERATION POINT)

herga

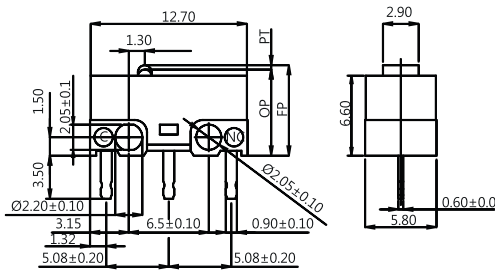
Technology Ltd

- High quality micro switches for a wide range of applications
- Excellent performance, high reliability and long service life
- UL/cUL and ENEC certification
- Applications - mouse, joystick, small home appliance, central heating control

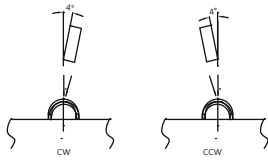


Reference dimensions mm

Unless otherwise specified, a tolerance of $\pm 0.4\text{mm}$ applies to all dimensions.

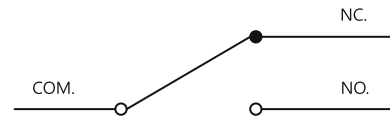


PRESSING DIRECTION IS SUGGESTED TO BE VERTICAL AND WITH $\pm 4^\circ$

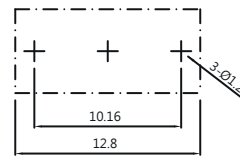


Available for the model that mouse has stoppers added more than Min.0.1mm

CONTACT CONFIGURATION



MOUNTING HOLES



P Type

General specifications

Contact resistance (initial)	Max. 100m Ω Measured by ohm meter -Open Voltage<1VDC, Driver current -100mA
Insulation Resistance (at 500 VDC / minute)	Min. 100 M Ω
Dielectric Strength	Min. 500VAC (50-60HZ)/minute between live parts. Min. 1500VAC (50-60HZ)/minute between live parts and dead metal parts
Operating Temperature Range	-40°C to +85°C (with no icing)

Vibration	10~55Hz, displacement 0.75 mm (p-p)
Electrical Service Life	0.1A - Min. 1,000,000 operations Other ratings - Min. 10,000 operations
Electrical Operating Frequency	10~30 operations per minute
Mechanical Service Life	Min. 1,000,000 operations
Mechanical Operating Frequency	120 operations per minute
Operating application of the switch	Set the switch pushing distance from 60% to 90% of the specified OT value

Certification information

Model Name	UL - cUL	ENEC
DF-01	1RA 125/250VAC μ T55 1E4 1RA 24VDC μ T55 1E4	1A 125/250VAC μ T55 1E4 1A 24VDC μ T55 1E4
DF-03	3A 125VAC (Temp:65°C) Min. 6000 operations	3A 125VAC μ T55 1E4
DF-G3	3A 125VAC (Temp:65°C) Min. 6000 operations	None
DF-D3	3A 5VDC /12VDC (Temp:65) Min. 6000 operations	None

Selection of rating & force

MODEL	Rating	L	S
DF	0.1A	★	★
	1A	★	★
	3A	★	★

NOTE: The symbol " ★ " represents the result is accepted

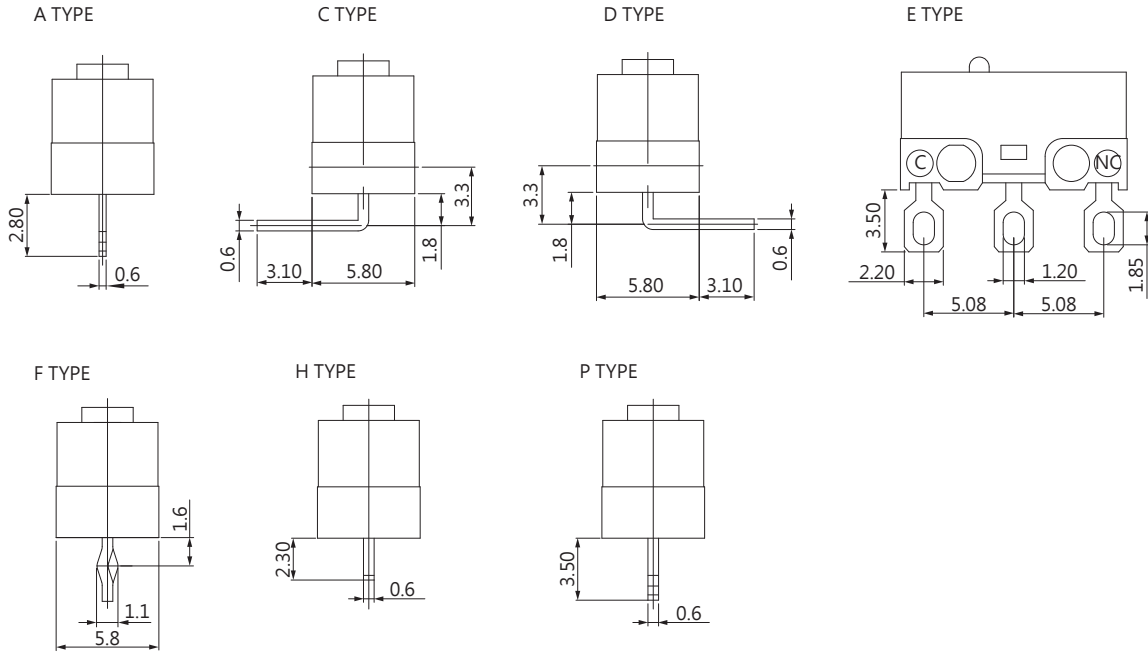


DF-M Series Micro Switches (HIGH OPERATION POINT)

herga

Technology Ltd

Terminal types



Ordering information

D	F	-	P	1		L	-	0		P	-	M	-	Z
SERIES PREFIX			RATING CURRENT			OPERATING FORCE		ACTUATOR TYPE		TERMINAL TYPE		HIGH OPERATION POINT		ROHS CODE
			P1	0.1A 125VAC		L	LIGHT	0		A				
			O1	1A 125/250VAC		S	STANDARD	1		C				
			O3	3A 125VAC				2		D				
			G1	0.1A 125VAC CONTACT PLATED GOLD				3		H				
			G3	3A 125VAC CONTACT PLATED GOLD				4		F				
			D3	3A 12VDC				5		P				
								6		E				
								7						
								8						
								9						

DF-M Series Micro Switches (HIGH OPERATION POINT)

herga

Technology Ltd

Operating characteristics

SWITCH TYPE	PART SUFFIX	OF Max. (gf)		OP (mm)	PT Max. (mm)	OT Min. (mm)	MD Max. (mm)	FP Max. (mm)	RF Min. (gf)
DF- □□□ -0 □ -M-Z		L	80	7.0±0.2	0.62	0.2	0.12	7.35	21
		S	150						35
DF- □□□ -1 □ -M-Z		L	30	8.4±0.8	3.0	0.6	0.8	10.6	5
		S	56						8
DF- □□□ -2 □ -M-Z		L	25	10.5±0.8	3.5	0.6	1.0	13.2	5
		S	43						7
DF- □□□ -3 □ -M-Z		L	35	7.9±0.8	2.9	0.3	0.6	10.0	5
		S	57						12
DF- □□□ -4 □ -M-Z		L	39	8.1±0.8	3.0	0.6	0.7	10.3	6
		S	69						10
DF- □□□ -5 □ -M-Z		L	50	9.1±0.8	2.0	0.4	0.3	11.0	5
		S	70						11
DF- □□□ -6 □ -M-Z		L	30	8.5±0.8	3.0	0.6	0.8	10.7	3
		S	50						8
DF- □□□ -7 □ -M-Z		L	27	11.3±1.0	3.5	0.3	0.8	13.85	3
		S	48						8
DF- □□□ -8 □ -M-Z		L	33	8.2±0.8	2.8	0.6	0.7	11.2	5
		S	54						9
DF- □□□ -9 □ -M-Z		L	13	10.4±2.2	7.7	1.0	1.0	15.65	2
		S	21	10.15±2.3					3